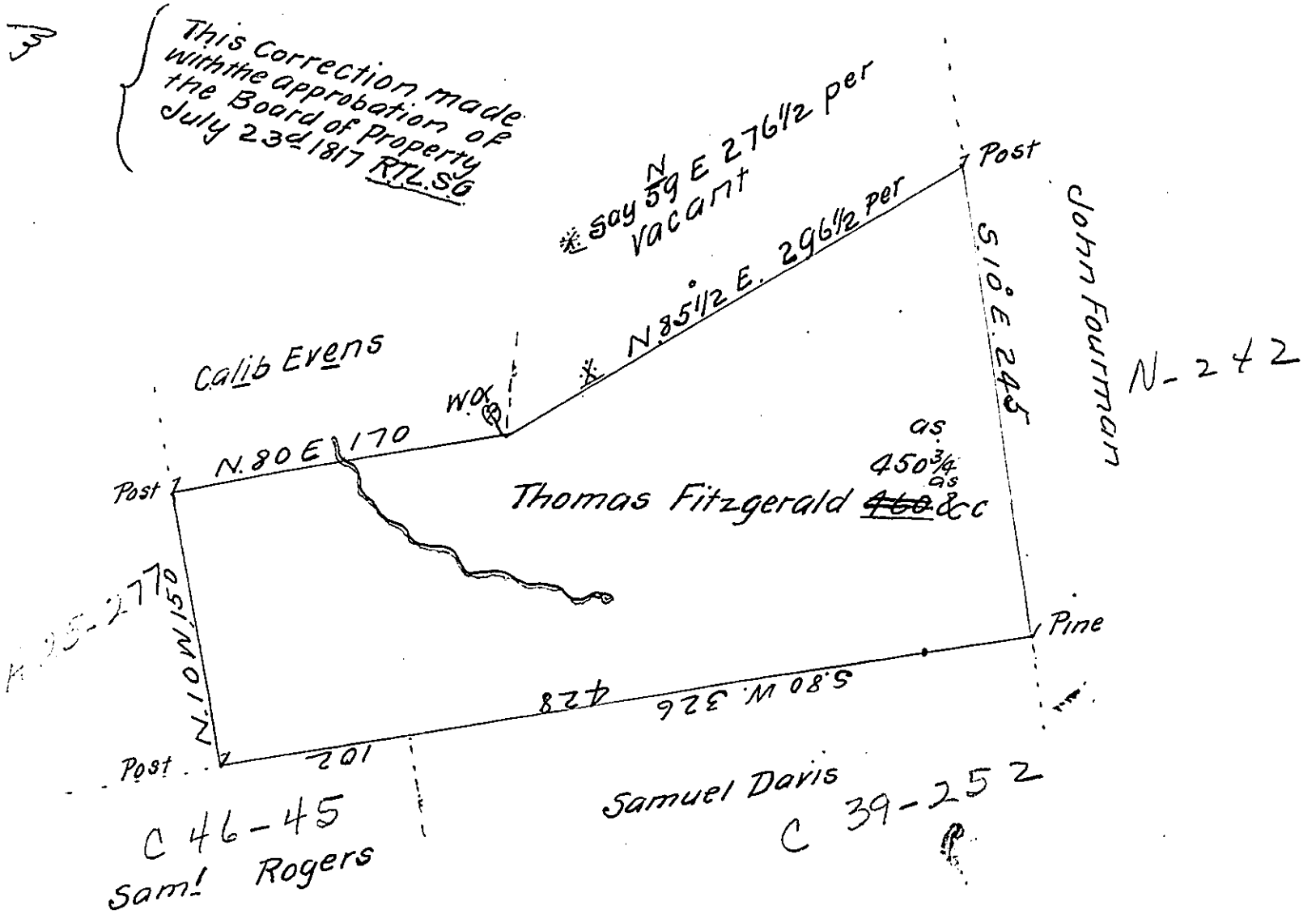


Sug. Loaf -  
Luzerne.



A Draught of a Tract of Land Called \_\_\_\_\_ situate on the  
Water of Nescopeck Creek on the south side of sd Creek.  
joining Land survd for Caleb Evans & others in Luzerne -  
formerly Northumbd) County containing Four hundred &  
Fifty ~~SMVY~~ acres 3/4 & allowe of six p Cent for Roads & c.

Surveyed for Tho<sup>s</sup> Fitzgerald the 12<sup>th</sup> day of April 1787  
in pursuance of a warrant dated the 12<sup>th</sup> day of July 1784

To John Lukens Esq<sup>r</sup> }  
Surv<sup>r</sup> Genl }  
by W<sup>m</sup> Gray D.S

IN TESTIMONY that the above is a copy of the original remaining on file in  
the Department of Internal Affairs of Pennsylvania, made  
conformably to an Act of Assembly approved the 16th day of  
February, 1833, I have hereunto set my Hand and caused  
the Seal of said Department to be affixed at Harrisburg,  
this Seventh day of February 19/2

Henry Houch  
Secretary of Internal Affairs.